

The Village of  
Thuli Pokhari,  
Nepal

A presentation to the Reno Soroptimist Club  
on February 15, 2001, by John Miller, RPCV, N-84 (1979-1984)

# Some Facts about Nepal

- Area: 56,827 square miles (slightly larger than North Carolina).
- Estimated Population in 2000: 24,842,000.
- Population in 1991 census: 18,491,097.
- Average Growth Rate: 3.82 percent (compare US at 1.02 percent).
- 90 percent of population is rural. Average density is 437 persons per square mile.

# Some Facts about Thuli Pokhari

- About 1 to 2 square miles?
- Population: 1 to 3 thousand?
- Main Castes Present: Brahmin, Chhetri (*Kshatriya*), Civil Castes.
- Main Mode of Income: Farming.
- Secondary Income: Shops, Crafts, Janata Sudarshan Secondary School (now a college).

# Nepal in Asia





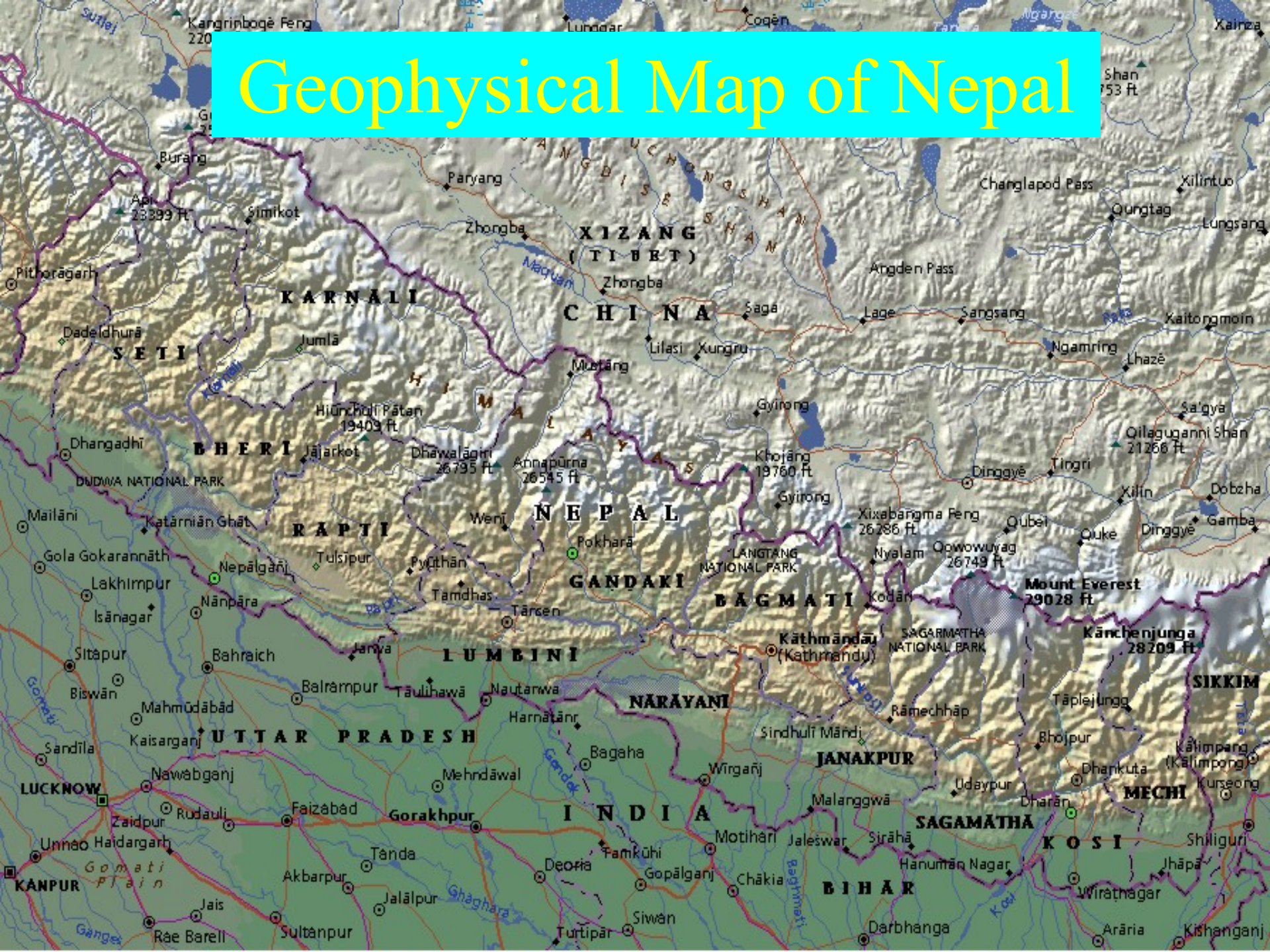
# A Full Map of Nepal



From World Book (TM) Multimedia Encyclopedia (c) 1999 World Book, Inc., 525 W. Monroe, Chicago, IL 60661. All rights reserved. Map data (c) 1999 MapQuest.com, Inc. All rights reserved. World Book map

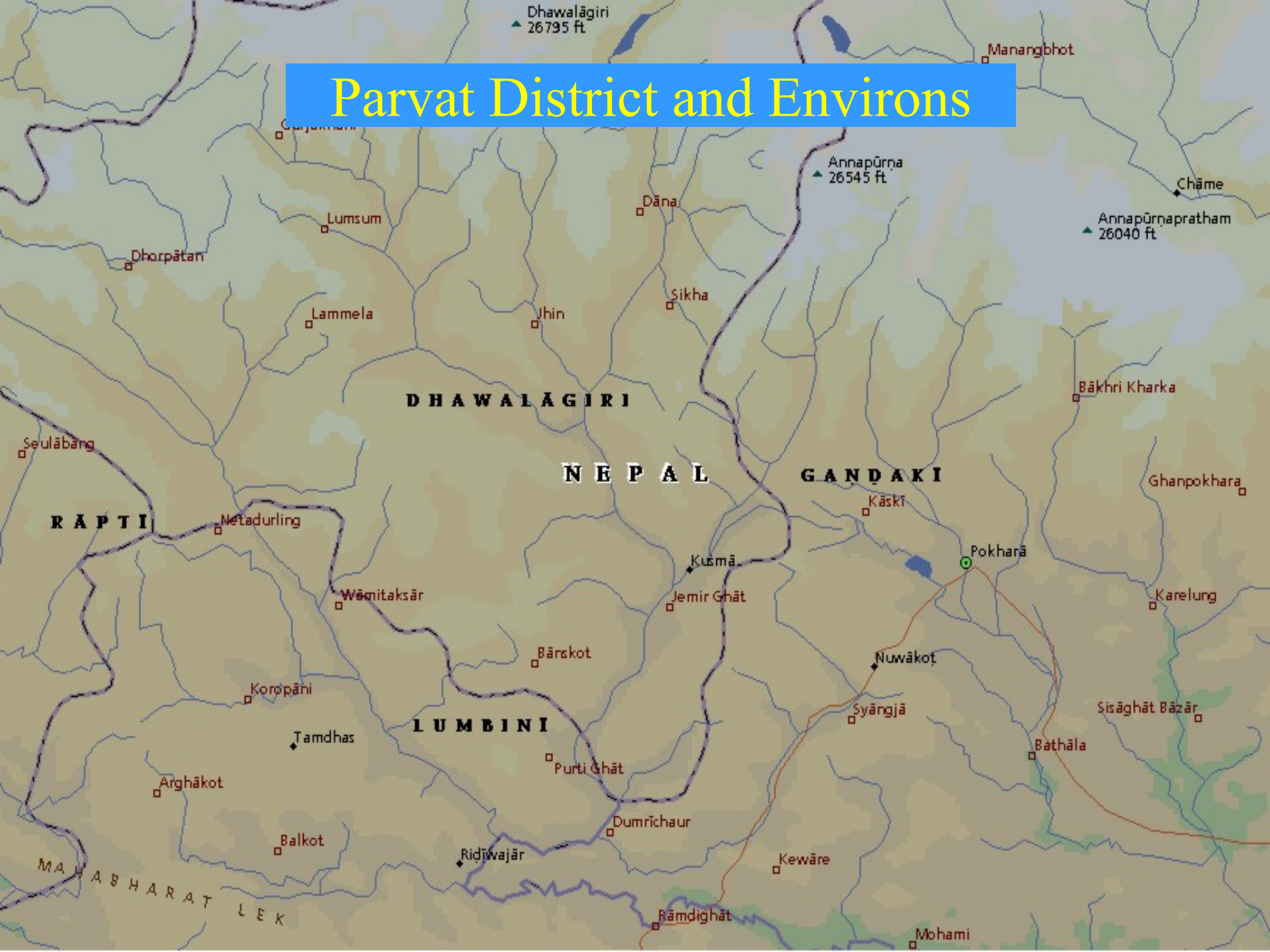


# Geophysical Map of Nepal





# Parvat District and Environs



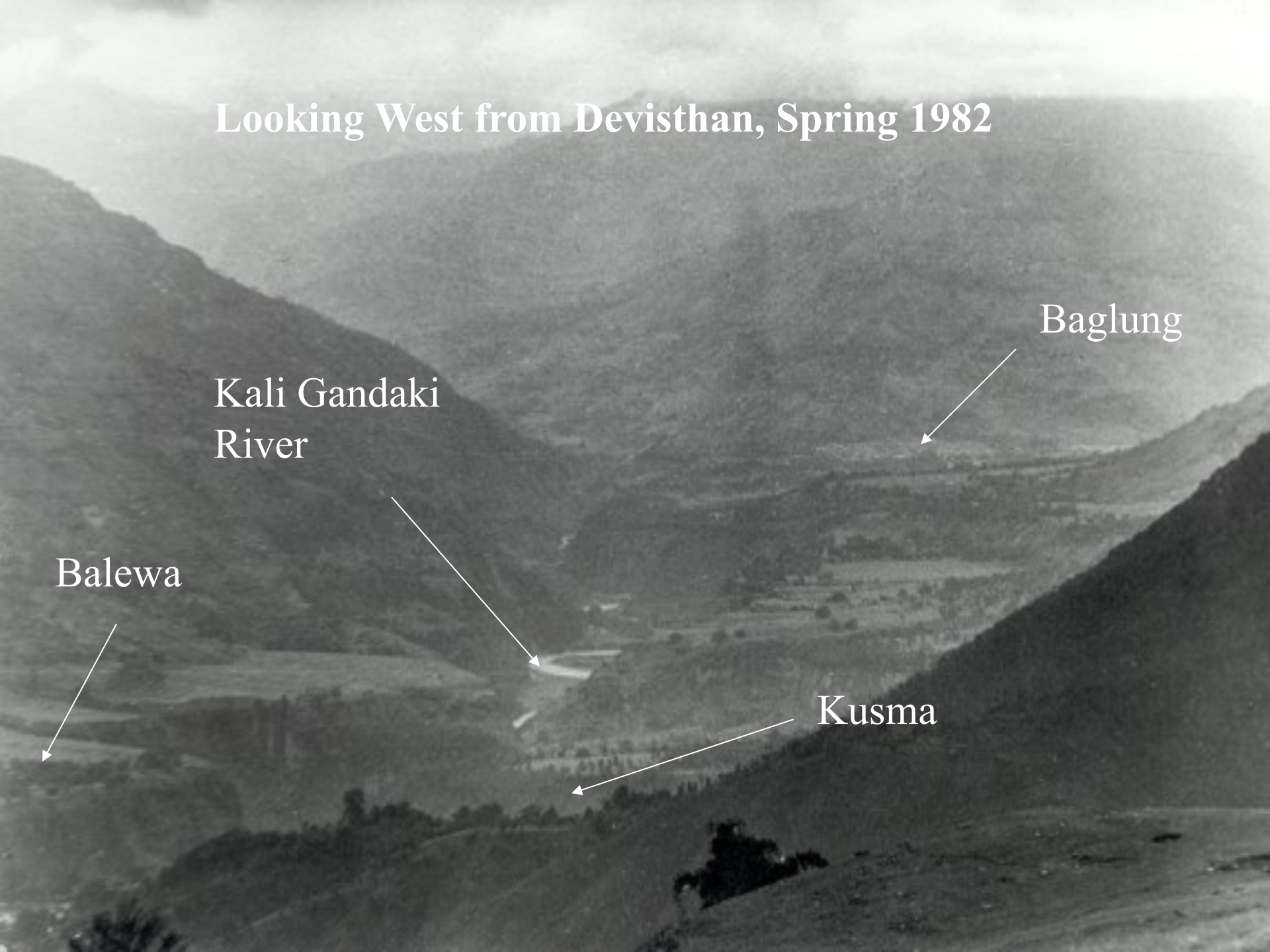
# Looking West from Devasthan, Spring 1982

Baglung

Kali Gandaki  
River

Balewa

Kusma

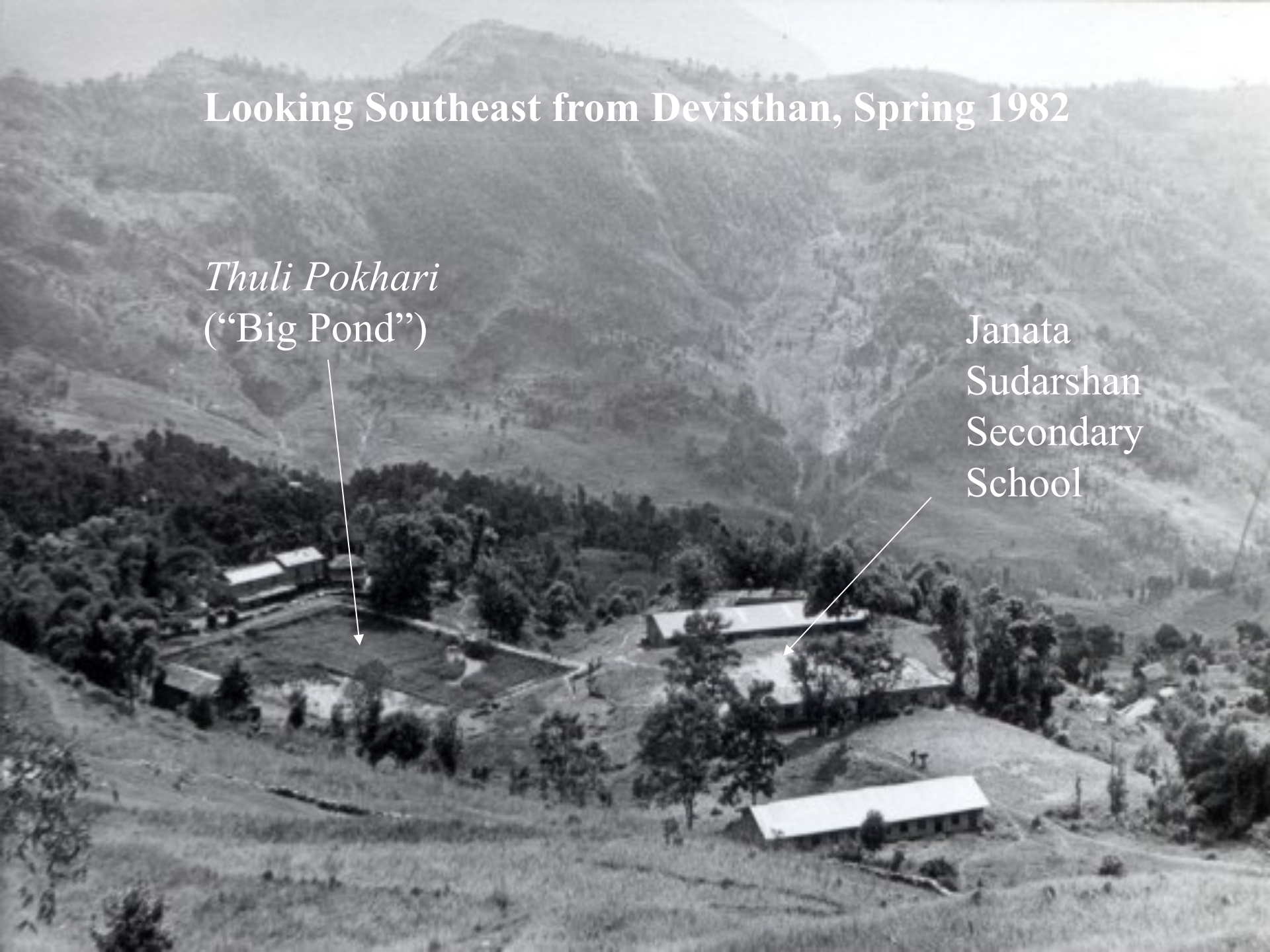




# Looking Southeast from Devisthan, Spring 1982

*Thuli Pokhari*  
("Big Pond")

Janata  
Sudarshan  
Secondary  
School





Close-Up of the “Big Pond” Using Telescopic Lens, Spring 1982



Annapurna

Macchapuchere

Looking North from Devisthan, Spring 1982

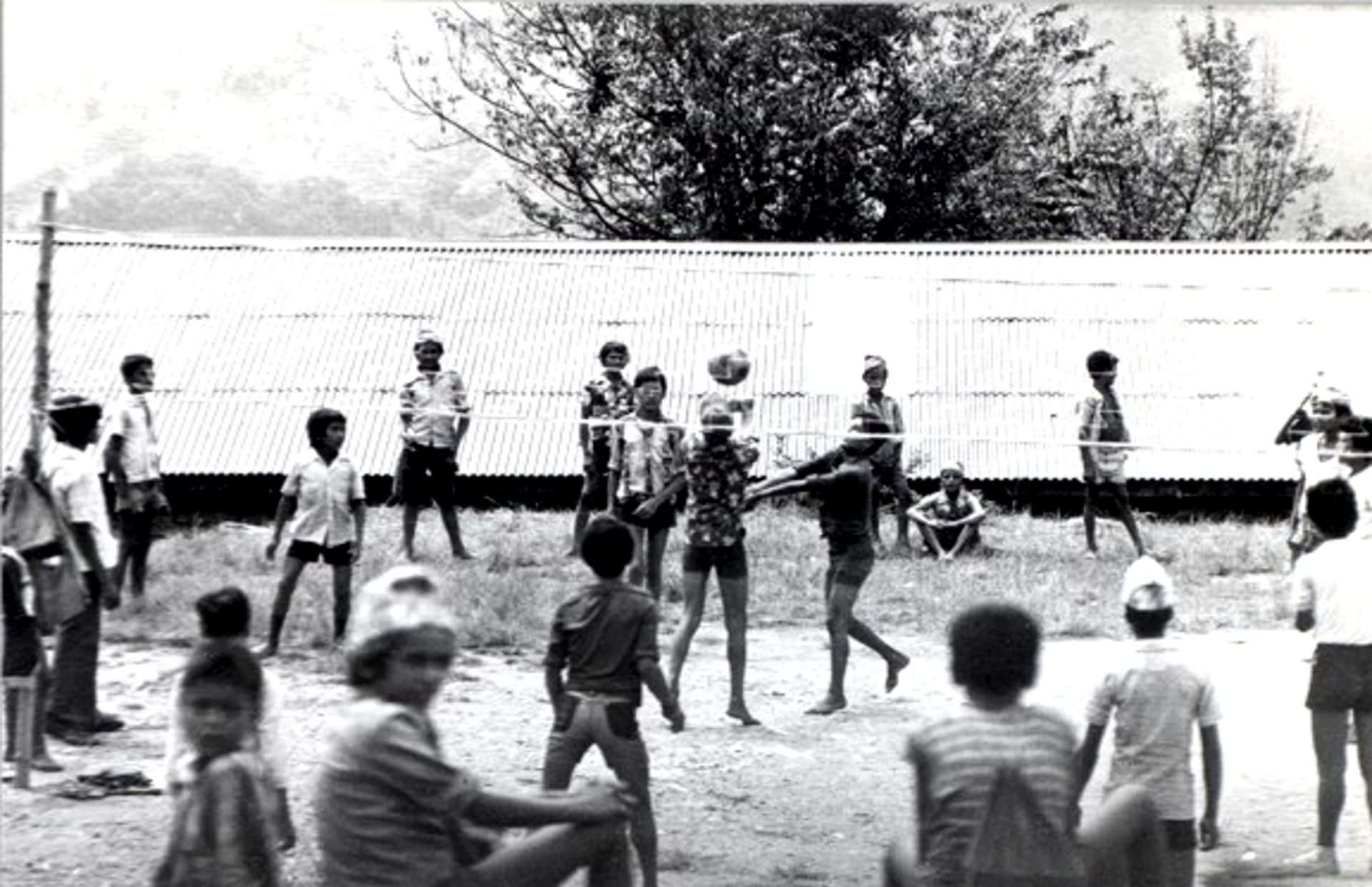


**Original Secondary School Building, 1982**





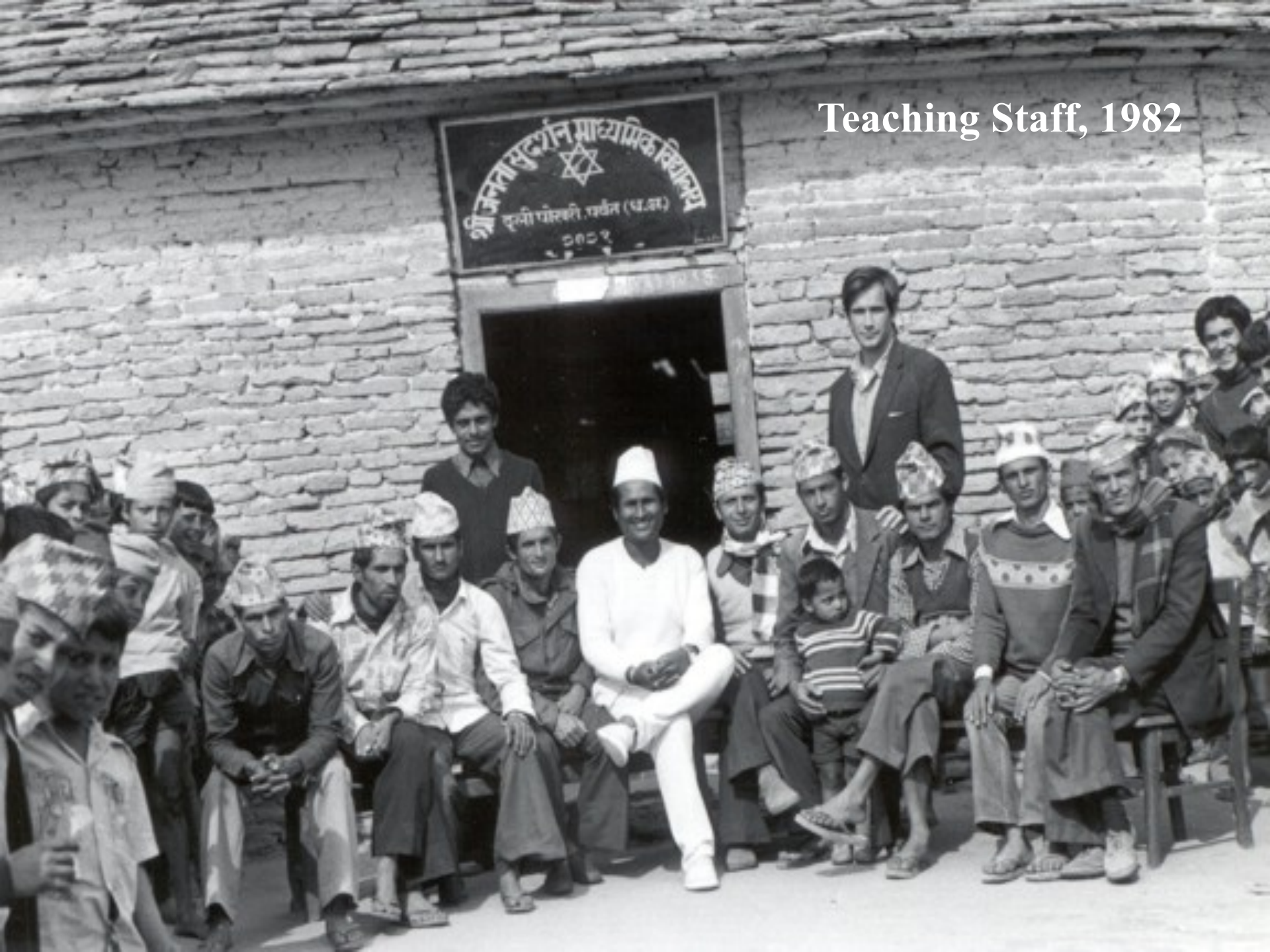
**Friday Afternoon School Function**

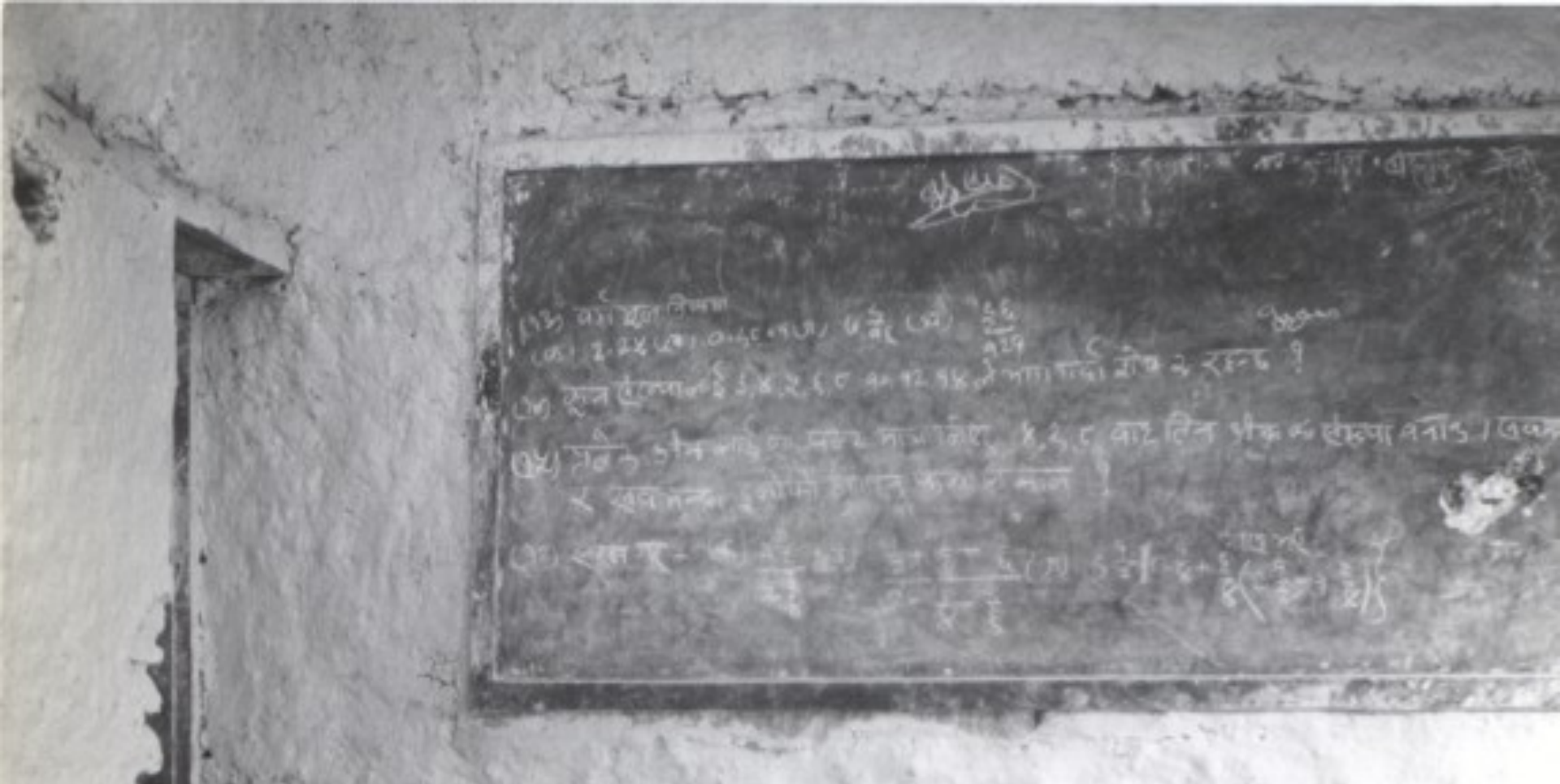


**Lunch Break Volleyball Session, 1982**



Teaching Staff, 1982

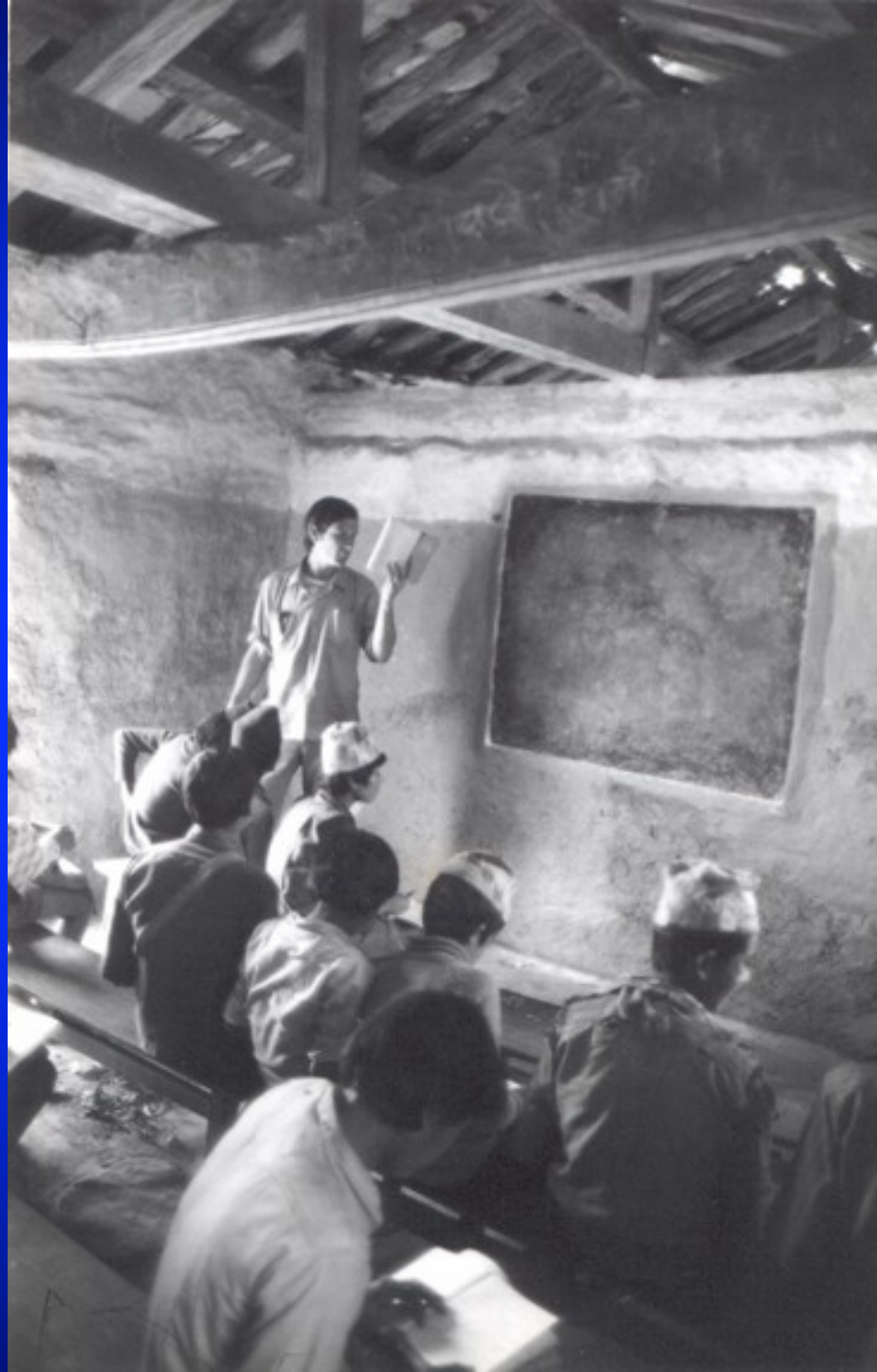




**Blackboard in New School Building Right after Final Exams**



**Teaching Math, Eighth  
Grade, March 1982**





**Mayor and House Guest**



## Tara Kumari, a Young Shepherdess





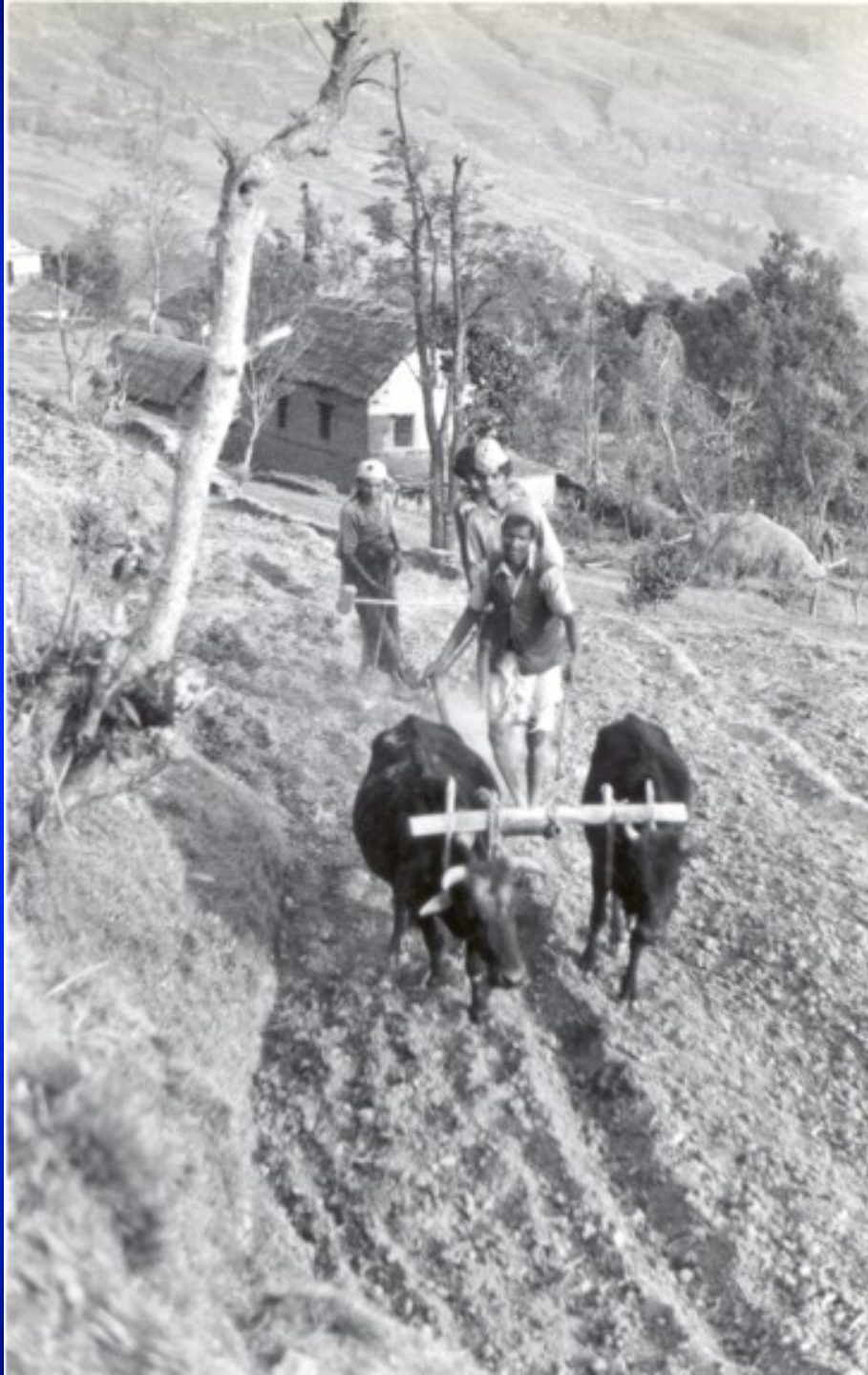
**Thuli Pokhari Village Council in Session**





Plowing Terraced Fields During the *Basanta* Season

**Another View of  
Farming, Homes in  
the Background**





# Chopping Firewood

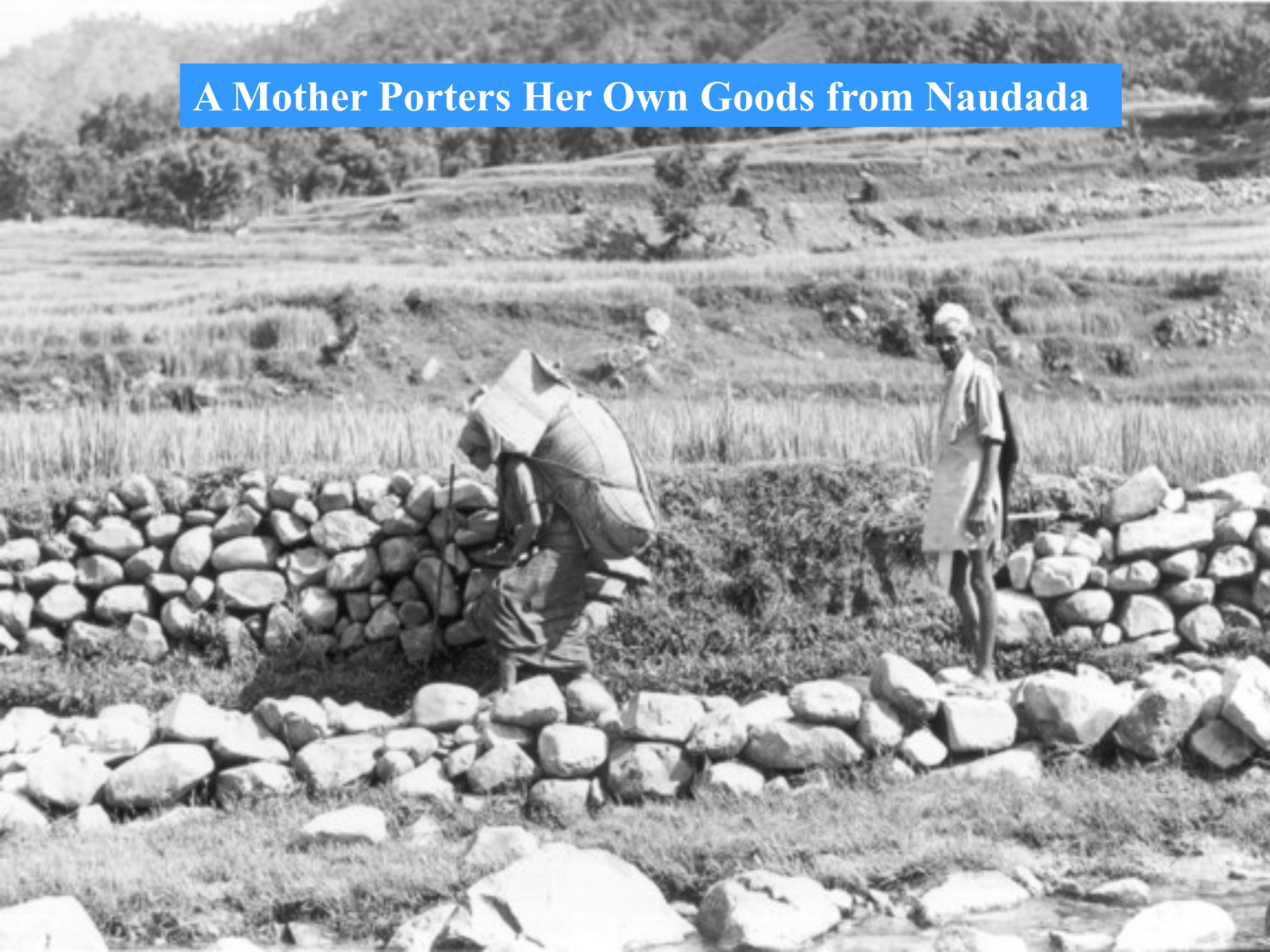


**Portering corrugated sheet metal and other goods from Naudada, a village 4 to 6 hours' walk from Thuli Pokhari. Loads can weigh over 150 pounds, and will be portered for up to 14 hours per day. Pay rate was about one US dollar per day.**





# A Mother Porters Her Own Goods from Naudada





**Balabhadra Guru's Children, Bhai Tika, Fall, 1982**